



# NURTURING & INSPIRING INDEPENDENT GLOBAL LEARNERS



BEACONHOUSE  
NEWLANDS  
— EARLY YEARS —



# DEVELOPING YOUNG MINDS TO BE THE BRIGHTEST SPARK

It only takes a spark to get inquisitive minds inspired. At Beaconhouse Newlands Early Years (BNEY), we nurture every child's positive social, physical and emotional development, artistic expression and creativity.

We follow the British Early Years Foundation Stage (EYFS) and the Cambridge Primary 1 curriculum.

Our programme is designed to support 21st Century skills through engaging the imagination, curiosity and critical thinking. We instill a love for learning through nurturing children's confidence to try new things and explore the world around them.



**Some see a child.  
We see future leaders.**



Your child inspires us to help them reach their fullest potential!



## PERSONAL DEVELOPMENT

## COMMUNITY INVOLVEMENT

## CHARACTER DEVELOPMENT

## RELATIONSHIP BONDS

Experience positive  
social interactions and  
learn how to build  
positive relationships









# OUR PHILOSOPHY SHINES THROUGH

Each child's mind is like a precious uncut gem. Our gold is to polish them to be creative and innovative in designing, exploring and discovering the world. Our child centered approach and programme provides each child with an opportunity for hands-on learning experiences in a safe and challenging environment, nurtured and guided by dedicated teachers. Every child has a learning journal to track their progress and development through our formative and summative assessment. The curriculum also enhances quality social interaction and promotes respect for diversity in our society. Your child will journey through the best and most effective teaching practices.



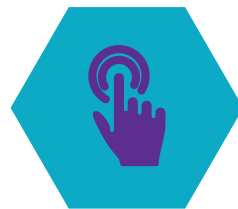
## **INTEGRATED LEARNING**

Our learning experiences are integrated and yet flexible around meaningful situations



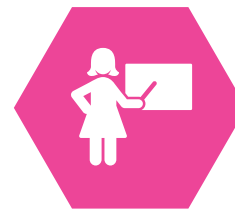
## **ACTIVE LEARNER**

Creative thinking and problem-solving skills will be developed



## **INTERACTIVE LEARNING**

We embed interactivity into our lessons for children to develop through experiential learning



## **EDUCATORS' ROLES**

Our teachers are co-partners in your child's learning




## **PARENTAL INVOLVEMENT**

We encourage parents to be involved in all aspects of their child's education



**Some see risk-taking.  
We see determination.**



# BNEY

## 7 BUILDING BLOCKS

Children can only excel when they have the right building blocks. BNEY focusses on 7 areas of learning and Enriched Curriculum guided by the 4 principles of Early Years Foundation Stage (EYFS) to create the perfect foundation for your child's learning experience

### 7 AREAS OF LEARNING & DEVELOPMENT



### THE EARLY YEARS FOUNDATION STAGE

The Four Principles of the EYFS are:








**Some think messy.  
We think creative.**





# BNEY LEARNER PROFILE

At the heart of our curriculum is our Learner Profile. This long term, holistic vision of education centres around your child and everything that we do. The learner profile is a set of values and characteristics we aim to develop in every child. Our teachers in school role model and teach these attributes through stories, learning and interactions with others. With this learning experiences, your child will not just grow but will apply to become a lifelong learner.



# Our students grow up to be...





# 6 REASONS TO CHOOSE BNEY



## Educational Learning Programmes

- 3 languages: English, Bahasa Malaysia & Mandarin
- Emphasis in Mathematics & Science



## Stimulating Environment;

Library, Swimming/Wading pool, Play area, Atelier (Art Studio), Little Chef's Kitchen, Integrated Technology Supported Learning, STEM Room



## Extended Day Programme & Enrichment Programmes



## Qualified and trained educators



## International School Readiness Programme into our Beaconhouse International Schools



## Waiver of Registration Fees for enrolment into Beaconhouse Primary Schools



**Some see playfulness.  
We see exploration.**





**LITTLE TOTS • 1.5+ AMAZING ANTS**

BNEY Little Tots Programme is a holistic, child-centred and exploratory curriculum that focuses on developing children's communication and language skills, creative expressions, physical abilities and well-being, personal and social development. Our curriculum centres on learning experiences which provide spontaneous, play situations where children make sense of things and people around them, investigate the world, form relationships and interactions with others.

**NURSERY 1 • 2.5+ BUMBLE BEES**

This programme is designed based on the understanding that this may be a child's first school experience, so the environment is carefully ordered and flexibly structured. The classroom is filled with a variety of learning tools, materials and other educational resources. English is emphasised throughout the variety of activities and daily interaction with their peers.

**NURSERY 2 • 3.5+ HAPPY HOPPERS**

Here, children's knowledge and skills will be strengthened and applied at a higher level, since between the ages of three and four years most children develop their physical, cognitive, creative, emotional and social skills. All our subjects are integrated and aim to support children in developing their creative and innovative minds enhancing their natural disposition for learning.

**RECEPTION • 4.5+ FANTASTIC FLYERS**

This level focuses largely on language mastery with effective social interaction. The learning environment for this group includes engaging in fun and meaningful learning activities and working in small groups. Children will be nurtured to develop scientific skills such as free exploration, posing hypothesis and drawing conclusions through different themes and projects. Children will also begin to engage in the Cambridge curriculum. The goal of this level is to empower and inspire children to strive for excellence and to become passionate, independent global learners.

## PRIMARY 1 • 5.5+ MIGHTY MINDS

This is the ultimate level of our pre-school education where children continue to experience stimulus activities to support their learning of Languages, Mathematics and Science. The thematic approach also includes elements of the Cambridge curriculum, which ensures children extend their learning to include different countries and cultures. The completion of Year 1 programme helps our children to meet the requirement for entry into Year 2 at our Newlands International School or other international schools.







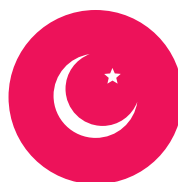
# BNEY ENRICHMENT PROGRAMMES



**Tutorial  
Classes:**  
**Mandarin & BM**



**Tae Kwon Do**



**Agama**



**Arts & Craft**



**Dance**



**Robotics**



**Speech & Drama:**  
**English or  
Mandarin**

## SCHOOL HOURS

**1**

**Half Day Programme**  
8.30am to 12.30pm  
Little Tots,  
Nursery 1 & 2

**2**

**Extended Programme**  
8.30am to 2.30pm  
Little Tots,  
Nursery 1 & 2

**3**

**Reception & Primary 1**  
8.30am to 2.30pm

**4**

**Full Day Programme**  
8.30am to 6.00pm  
All Levels

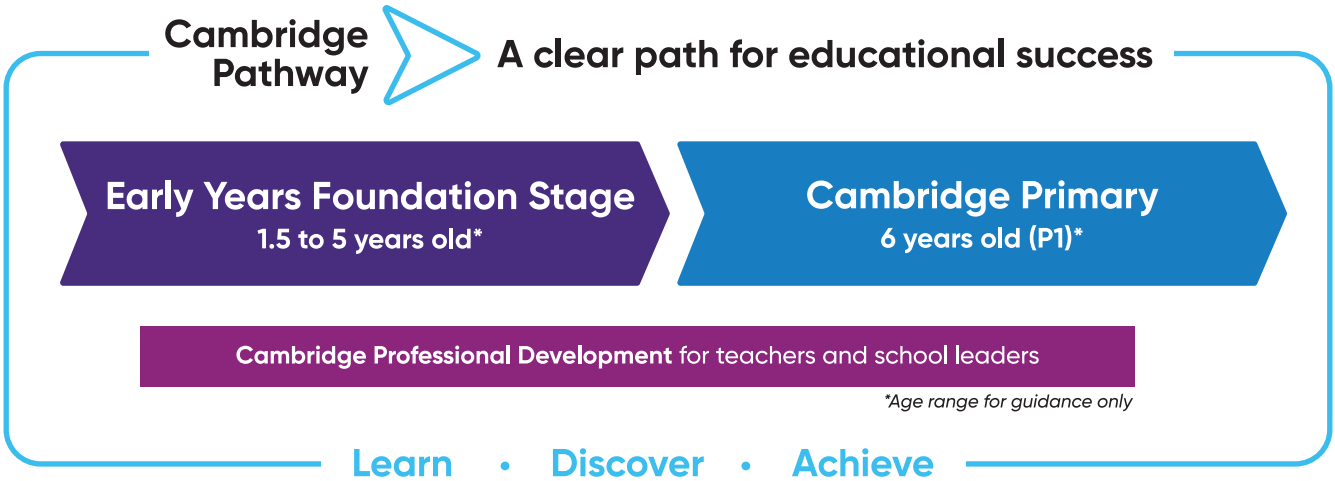






# THE SEAMLESS TRANSITION INTO PRIMARY YEARS

We nurture children securely towards a seamless transition from the Early Years Foundation Stage to a more formal curriculum in Primary 1, enabling students to build upon their blocks of learning within a nurturing environment where genuine love for learning is cultivated.



## CAMBRIDGE CURRICULUM FOR PRIMARY 1 - LEARNING TOPICS

ENGLISH	MATHEMATICS	SCIENCE	ICT	GLOBAL PERSPECTIVES
<ul style="list-style-type: none"><li>● Writing &amp; Making Sentences</li><li>● Reading</li><li>● Speaking</li></ul>	<ul style="list-style-type: none"><li>● Numbers</li><li>● Addition and Subraction</li><li>● Problem Solving</li><li>● Geometry</li><li>● Measurement</li></ul>	<ul style="list-style-type: none"><li>● Living and Non-Living</li><li>● Push and Pull</li><li>● Making Sound</li><li>● Type of Materials</li><li>● Plants</li></ul>	<ul style="list-style-type: none"><li>● Typing Skills</li><li>● Select Icons</li><li>● Use the search engine</li><li>● Create Images</li></ul>	<ul style="list-style-type: none"><li>● Understanding the World</li><li>● Explore Different Cultures</li></ul>

## BEACONHOUSE NEWLANDS EARLY YEARS PRE-SCHOOLS

### Beaconhouse Newlands Early Years, Bangsar

No. 2, Lorong Bukit Pantai 7, Off Lorong Bukit Pantai 8,  
Jalan Bukit Pantai, 59100 Bangsar,  
Wilayah Persekutuan, Kuala Lumpur  
T : +603 2201 5116  
HP: 018 207 8008  
E : bangsar@bney.edu.my

### Beaconhouse Newlands Early Years, SS2

No. 37, Jalan SS2/44, 47300 Petaling Jaya,  
Selangor Darul Ehsan  
T: +603 7865 0453  
HP: 018 216 8008  
E : ss2@bney.edu.my

## INTERNATIONAL SCHOOLS

### Beaconhouse Sri Inai

Lot No. 314, Jalan Jenjarum, Off Jalan SS 23/6,  
Taman SEA, 47400 Petaling Jaya, Selangor  
Darul Ehsan, Malaysia  
T : +603 7804 6025, 7804 5403  
HP: 018 221 8008  
E : inai-international@beaconhouse.edu.my

### Beaconhouse Newlands Kuala Lumpur

Lot No. 2855, Batu 9, Jalan Cheras,  
43200 Cheras, Selangor Darul Ehsan, Malaysia  
T : +603 9082 4759  
HP: 018 223 8008  
E : newlands@beaconhouse.edu.my

### Beaconhouse International Primary School at Gamuda Gardens

Lot 3825 & 3826 Jalan Sg. Serai, Jalan Kampung Sungai Serai,  
48050 Rawang, Selangor  
T : +603 6087 7659  
HP : +60182198008  
E : gamudagardens@beaconhouse.edu.my

### Beaconhouse Newlands Early Years, U Thant Ampang

No. 23, Jalan Taman U Thant, Ampang Hilir,  
55000 Wilayah Persekutuan, Kuala Lumpur  
T: +603 2181 2094  
HP: 018 217 8008  
E : uthant@bney.edu.my

## PRIVATE NATIONAL SCHOOLS

### Beaconhouse Sri Lethia

No. 109, Jalan Limau, Off Jalan Istana,  
41000 Klang, Selangor Darul Ehsan, Malaysia  
T : +603 3373 3771  
HP: 018 224 8008  
E : sri-lethia@beaconhouse.edu.my

### Beaconhouse Sri Murni

Lot No. 2854, Batu 9 Jalan Cheras, 43200 Cheras,  
Selangor Darul Ehsan, Malaysia  
T : +603-9075 1662  
HP: 018 227 8008  
E : sri-murni@beaconhouse.edu.my





BEACONHOUSE  
NEWLANDS

EARLY YEARS

[www.bney.edu.my](http://www.bney.edu.my)