



TEMPLER PARK  
INTERNATIONAL SCHOOL



# Primary School Education

*Grade 1 till Grade 6 (Age 6-11)*

International Primary combines a world-class DUAL curriculum (British Cambridge curriculum and Value Added American curriculum) with high-quality support for teachers, alongside coordinated assessments which will enable learners to seek, demonstrate, articulate and appreciate the knowledge and skills that will support them as lifelong learners. The curriculum is dedicated to help schools in developing learners to think out-of-the-box, be responsible, reflective, imaginative and engaged. These skills shall enable them to be holistic individuals, while practicing the school's core values – respect, tolerance and excellence.

## Subjects:

1. English Language
2. Malay Language
3. Mathematics
4. Art and Design
5. Mandarin Language
6. Global Perspective
7. Physical Education
8. Music
9. Science
10. Computing
11. Digital Literacy

## School Time:

Monday – Friday: 8.00am -3.00pm

## Teaching and Learning Methods:

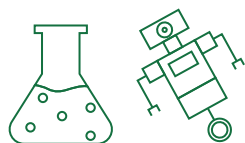
- Modern and Traditional Teaching
- Flex Learning
- Virtual Learning

## Dual Study Stream:

- British Curriculum (Main Curriculum)
- American Curriculum (Secondary Curriculum)

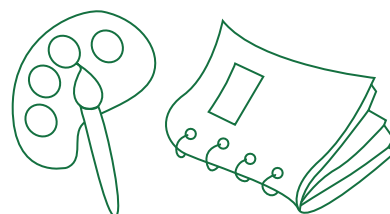


Grade	Age	Official Tuition Fee
Grade 1, 2, 3	06+	RM30000
Grade 4, 5, 6	09+	RM35000



	Official
Application Fee	RM 1000
Registration Fee	RM 4000
Security Deposit	RM 10000
Resources Fee + Annual Fee	RM 6000
International Office	RM 5000

Admission Date
SEP - DEC (1st Term)
JAN - APR (2nd Term)
MAY - AUG (3rd Term)



## Cambridge Pathway



A clear path for educational success from age 5 to 19

### Cambridge Primary 5 to 11 years old\*

- English (1st and 2nd language)
- Mathematics
- Science
- ICT
- Cambridge Global Perspectives

### Cambridge Lower Secondary 11 to 14 years old\*

- English (1st and 2nd language)
- Mathematics
- Science
- ICT
- Cambridge Global Perspectives

### Cambridge Upper Secondary 14 to 16 years old\*

- A wide choice of subjects at:
- Cambridge IGCSE® (70+)
  - Cambridge O Level (40+)
  - Cambridge ICE Certificate

### Cambridge Advanced 16 to 19 years old\*

- A wide choice of subjects at:
- Cambridge International AS & A Level (55+)
  - Cambridge Pre-U (20+)
  - Cambridge AICE Diploma

Cambridge Professional Development for teachers and school leaders

\*Age ranges are for guidance only

Learn • Discover • Achieve



**TEMPLER PARK**  
INTERNATIONAL SCHOOL



# Middle School Education

*Grade 7 till Grade 9 (Age 12-14)*

International Lower Secondary provides a seamless progression from International Primary to Cambridge / American qualifications or can be used as a stand-alone curriculum to develop learners' skills and confidence in English, Mathematics and Science. International Lower Secondary has been developed to link seamlessly to form a continuum with the International Primary, and provides standardized tests to enable the careful monitoring of progress from primary to lower secondary phases. It also serves as a robust foundation, and provides excellent preparation for learners embarking on Cambridge IGCSE / American IB. At the end of the programme, Cambridge Checkpoint assessments are available to provide detailed feedback on learners' strengths and weaknesses.

## Subjects:

1. English Language
2. Malay Language
3. Mathematics
4. Art and Design
5. Mandarin Language
6. Geography
7. Physical Education
8. History
9. Science
10. Computing
11. Digital Literacy

## School Time:

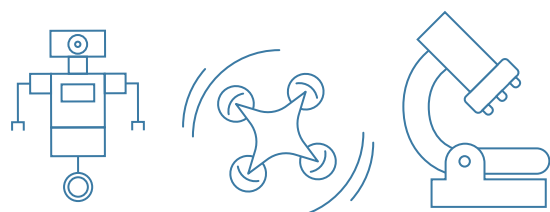
Monday – Friday: 8.00am -3.00pm

## Teaching and Learning Methods:

- Modern and Traditional Teaching
- Flex Learning
- Virtual Learning

## Dual Study Stream:

- British Curriculum (Main Curriculum)
- American Curriculum (Secondary Curriculum)





Grade	Age	Official Tuition Fee
Grade 7, 8, 9	12+	RM40000



	Official
Application Fee	RM 1000
Registration Fee	RM 4000
Security Deposit	RM 10000
Resources Fee + Annual Fee	RM 6000
International Office	RM 5000

Admission Date
SEP - DEC (1st Term)
JAN - APR (2nd Term)
MAY - AUG (3rd Term)



## Cambridge Pathway



A clear path for educational success from age 5 to 19

### Cambridge Primary 5 to 11 years old\*

- English (1st and 2nd language)
- Mathematics
- Science
- ICT
- Cambridge Global Perspectives

### Cambridge Lower Secondary 11 to 14 years old\*

- English (1st and 2nd language)
- Mathematics
- Science
- ICT
- Cambridge Global Perspectives

### Cambridge Upper Secondary 14 to 16 years old\*

- A wide choice of subjects at:
- Cambridge IGCSE® (70+)
  - Cambridge O Level (40+)
  - Cambridge ICE Certificate

### Cambridge Advanced 16 to 19 years old\*

- A wide choice of subjects at:
- Cambridge International AS & A Level (55+)
  - Cambridge Pre-U (20+)
  - Cambridge AICE Diploma

Cambridge Professional Development for teachers and school leaders

\*Age ranges are for guidance only

Learn • Discover • Achieve



TEMPLER PARK  
INTERNATIONAL SCHOOL



## High School Education

*Grade 10 till Grade 12 (Age 15-17)*

The Cambridge International General Certificate of Secondary Education (IGCSE) is one of the most acknowledged qualifications worldwide. Cambridge IGCSE courses are renowned for developing vital educational skills, including knowledge recall, oral skills, problem-solving, initiative, teamwork and investigative skills. The resulting qualification provides a foundation for higher level courses, such as Cambridge A level and AS Levels, of Cambridge Advanced International Certificate of Education; the North American Advanced Placement Programme and the International Baccalaureate.

### Subjects:

1. English Language
2. Malay Language
3. Mathematics
4. Additional Mathematics
5. Economics
6. Physics
7. Chemistry
8. Biology
9. Accounting
10. Business Studies
11. Law

### School Time:

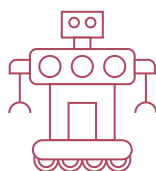
Monday – Friday: 8.00am -3.00pm

### Teaching and Learning Methods:

- Modern and Traditional Teaching
- Flex Learning
- Virtual Learning

### Dual Study Stream:

- British Curriculum (Main Curriculum)
- American Curriculum (Secondary Curriculum)

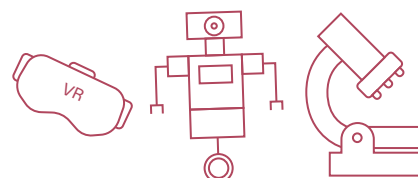


Grade	Age	Official Tuition Fee
Grade 10, Grade 11, 12	15+ 16+	RM45000 RM50000



	Official
Application Fee	RM 1000
Registration Fee	RM 4000
Security Deposit	RM 10000
Resources Fee + Annual Fee	RM 6000
International Office	RM 5000

Admission Date
SEP - DEC (1st Term)
JAN - APR (2nd Term)
MAY - AUG (3rd Term)



A clear path for educational success from age 5 to 19

Cambridge Primary 5 to 11 years old*	Cambridge Lower Secondary 11 to 14 years old*	Cambridge Upper Secondary 14 to 16 years old*	Cambridge Advanced 16 to 19 years old*
<ul style="list-style-type: none"> <li>English (1st and 2nd language)</li> <li>Mathematics</li> <li>Science</li> <li>ICT</li> <li>Cambridge Global Perspectives</li> </ul>	<ul style="list-style-type: none"> <li>English (1st and 2nd language)</li> <li>Mathematics</li> <li>Science</li> <li>ICT</li> <li>Cambridge Global Perspectives</li> </ul>	<p>A wide choice of subjects at:</p> <ul style="list-style-type: none"> <li>Cambridge IGCSE® (70+)</li> <li>Cambridge O Level (40+)</li> <li>Cambridge ICE Certificate</li> </ul>	<p>A wide choice of subjects at:</p> <ul style="list-style-type: none"> <li>Cambridge International AS &amp; A Level (55+)</li> <li>Cambridge Pre-U (20+)</li> <li>Cambridge AICE Diploma</li> </ul>

Cambridge Professional Development for teachers and school leaders

\*Age ranges are for guidance only

Learn • Discover • Achieve

## Pathway After Graduation

Progression Pathway after Graduation in TPIS enable them to enrol in Top Universities and Colleges around World especially :

- United Kingdom
- United States
- Canada
- Scotland
- Republic of Ireland
- Australia
- New Zealand

## British & American Curriculum Exams & Test Offered

- General Certificate of Secondary Education (GCSE)
- International General Certificate of Secondary Education (IGCSE)
- A Levels
- Scholastic Aptitude Test (SAT)
- American College Test
- Advanced Placement (AP)
- O Levels

